



* All images in this datasheet are for illustrative purposes only.

LG MAGNIT

Micro LED True Innovation behind New Depths



Black Immersion



Accurate Color



Wide Viewing Angle
for Color Uniformity



Intelligent Processor



Low Grayscale
Image Clarity

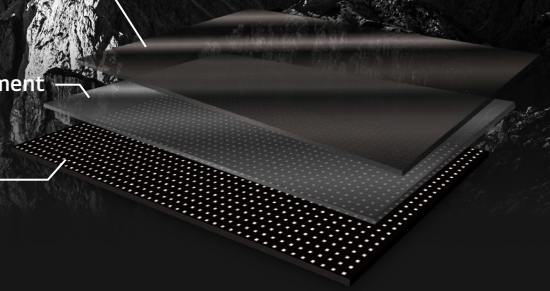


High Reliability

Full Black Coating
Technology

LG Surface Treatment
Technology

Chip on Board
Technology



Black Immersion, Enlivened Details

LG MAGNIT's revolutionary chip transfer, full black coating, and newly incorporated surface treatment technology unite to provide outstanding black expression, vibrant colors, heightened contrast, and an unparalleled immersive visual experience. Witness the pinnacle of visual excellence as even the most intricate shadow details hidden in darkness.

* Based on LG's conventional LED Signage



Accurate Colors as Intended

LG MAGNIT's careful selection of LED chips guarantees uniform and pure colors across the entire screen. Experience vibrant and precise colors that faithfully reflect the original source, thanks to the narrowed wavelength. The enhanced Gamut Transfer technology elevates color representation to a new level, ideal for environments that require precise and lifelike color reproduction.



Wide Color Viewing Angle

LG MAGNIT sets a new standard for color uniformity, providing vibrant hues from various angles. Whether you're directly in front or off to the side, LG MAGNIT consistently displays precise colors. This reliable performance ensures that attendees in a large space sees consistent color representation. LG MAGNIT's color consistency has also been recognized with TÜV certification for its wide viewing angle.

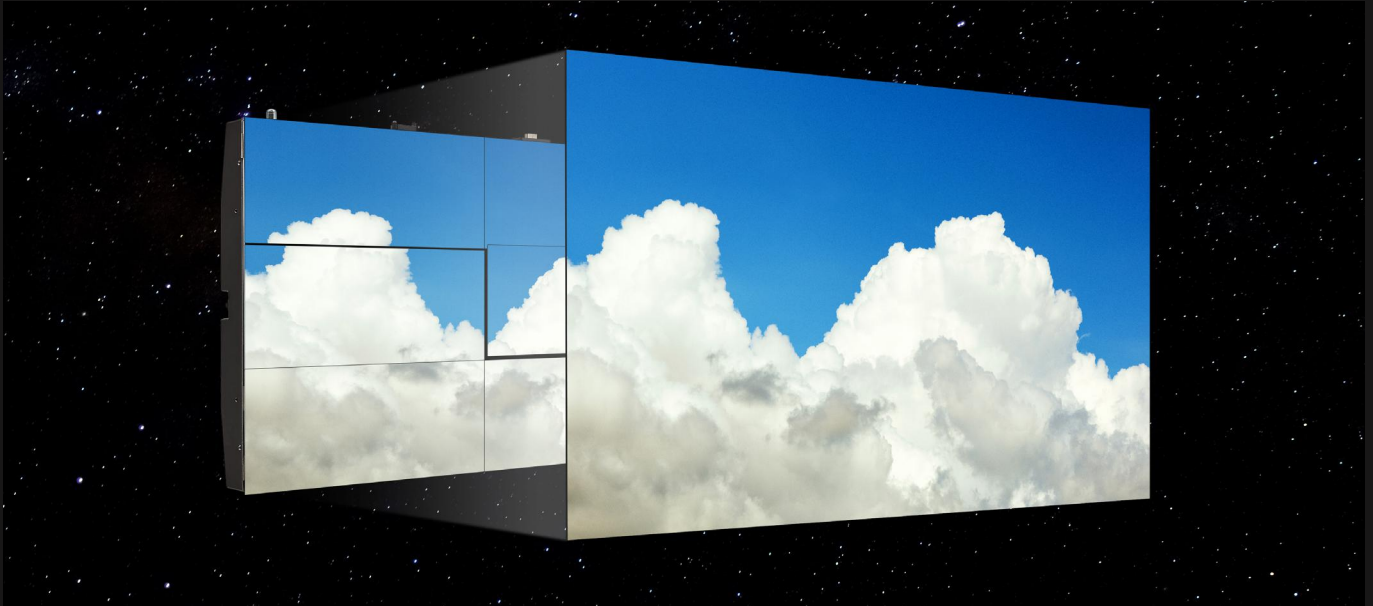
* The LSAB007-*22 009-*23, U33, 012-*2, U22 LED module passed a TÜV Rheinland-approved test following "2 PfG Q2865 / 05.23 Evaluation of Color consistency wide viewing angle". This covers aspects like Color consistency(left/right), Color consistency(top/bottom), Color direction, Viewing angle segmentation(left/right), Color consistency(Color gamut). (Certificate No. Q50589187 0001)



Stronger Light and Shadow

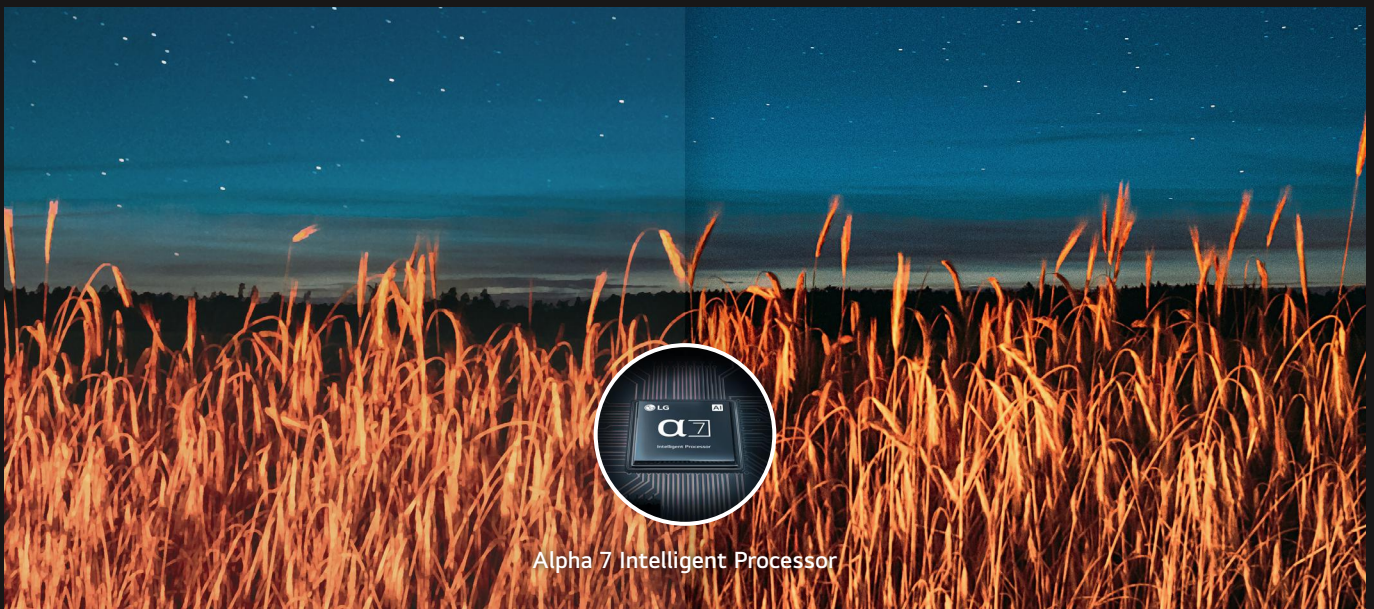
The solid black LG MAGNIT delivers an exceptionally high contrast ratio, which is crucial for picture quality. The distinction between dark and light areas is clear, making every part of the content stand out. Additionally, LG MAGNIT has received TÜV certification for its outstanding image clarity in low grayscale images. Thanks to this great display quality of low grayscale images, even the darkest scenes are displayed with remarkable precision, letting viewers see every nuance and detail as intended.

* The LSAB007-*22, 009-*25, 009-*33, 012-*22 LED module passed a TÜV Rheinland-approved test following "2 PfG Q2893 / 05.24 Evaluation of Low Grayscale Image Clarity". This covers aspects like Pixel loss ratio, White Balance, Gamma Difference. (Certificate No. Q50632140 0001)



Visually Consistent and Seamlessly Integrated Display

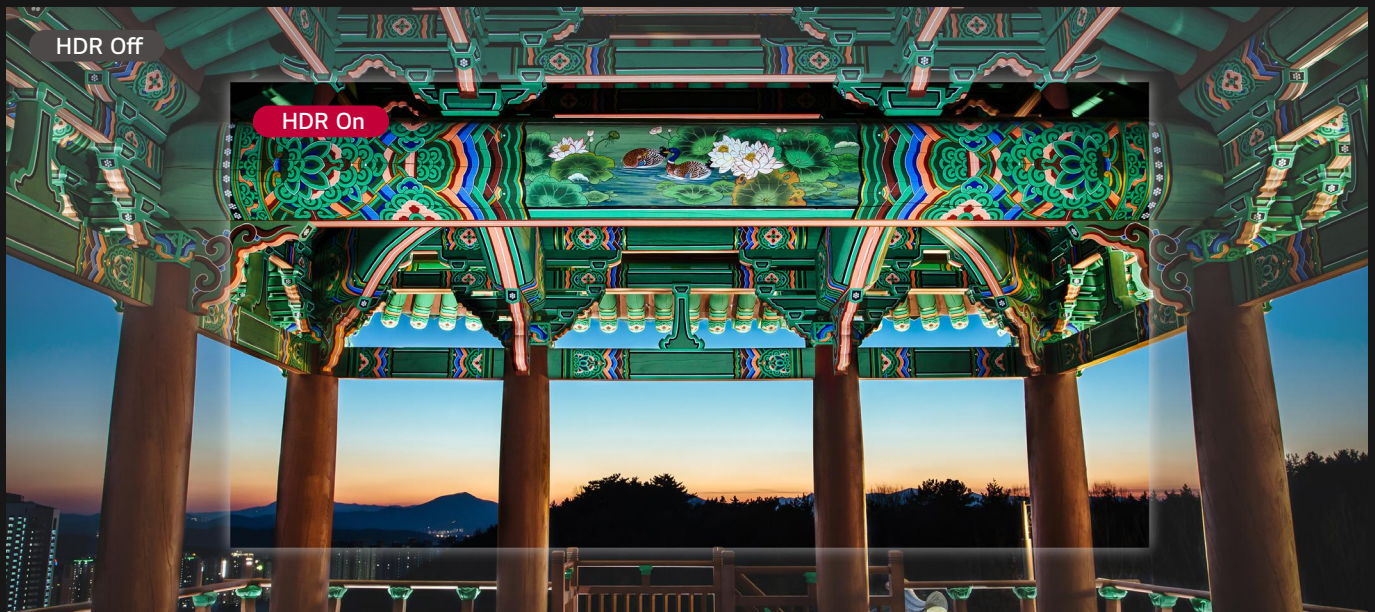
LG MAGNIT's module alignment technology minimizes gaps on the front surface of modules and reduces variations in black levels between modules, even before the product leaves the factory. Furthermore, during installation, if gaps occur between screens, our Z-axis adjustment feature enables easy alignment without the need to dismantle the product, ensuring a seamless viewing experience.



Intelligent Image Processor

The Alpha 7 Intelligent Processor which is adopted from LG's TV technology recognizes and analyzes the original content, optimizing the clarity and sharpness of the content for itself.

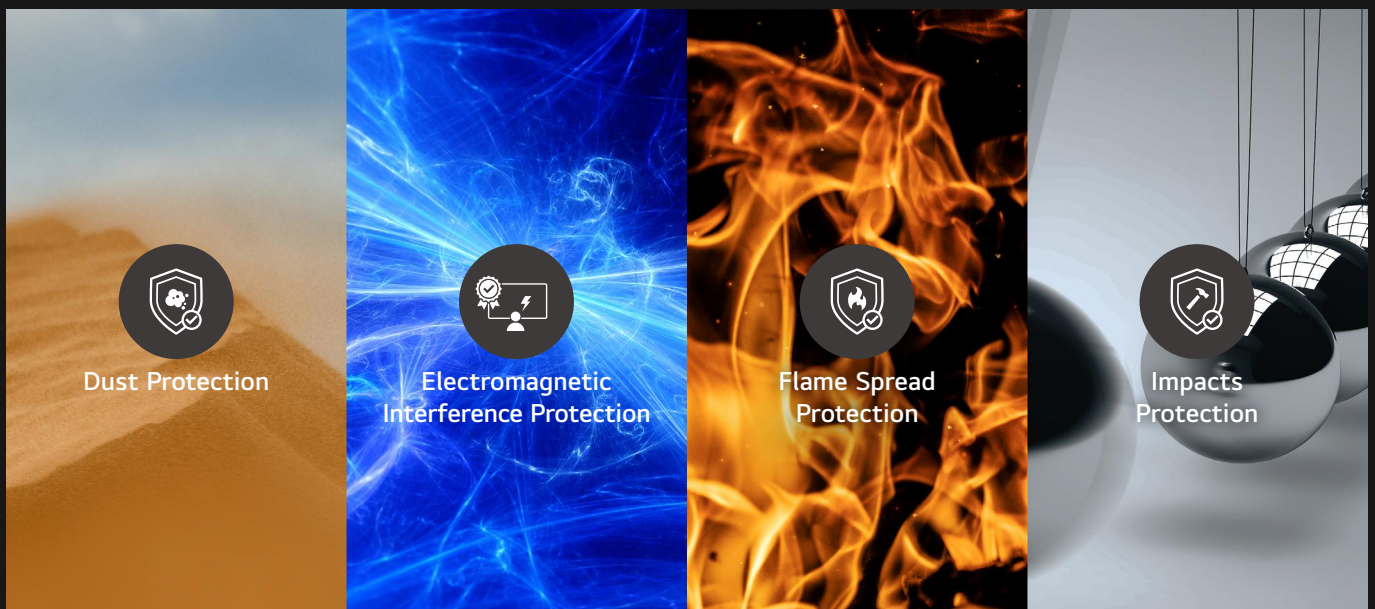
* The above functions are created by using deep learning AI technology to improve the picture quality.



Vivid Color Expression Powered by HDR

With HDR (HDR10, HDR10 Pro*) support, content becomes vivid with great visual impact. The wider color spectrum and greater contrast ratio allow viewers to fully enjoy lively content.

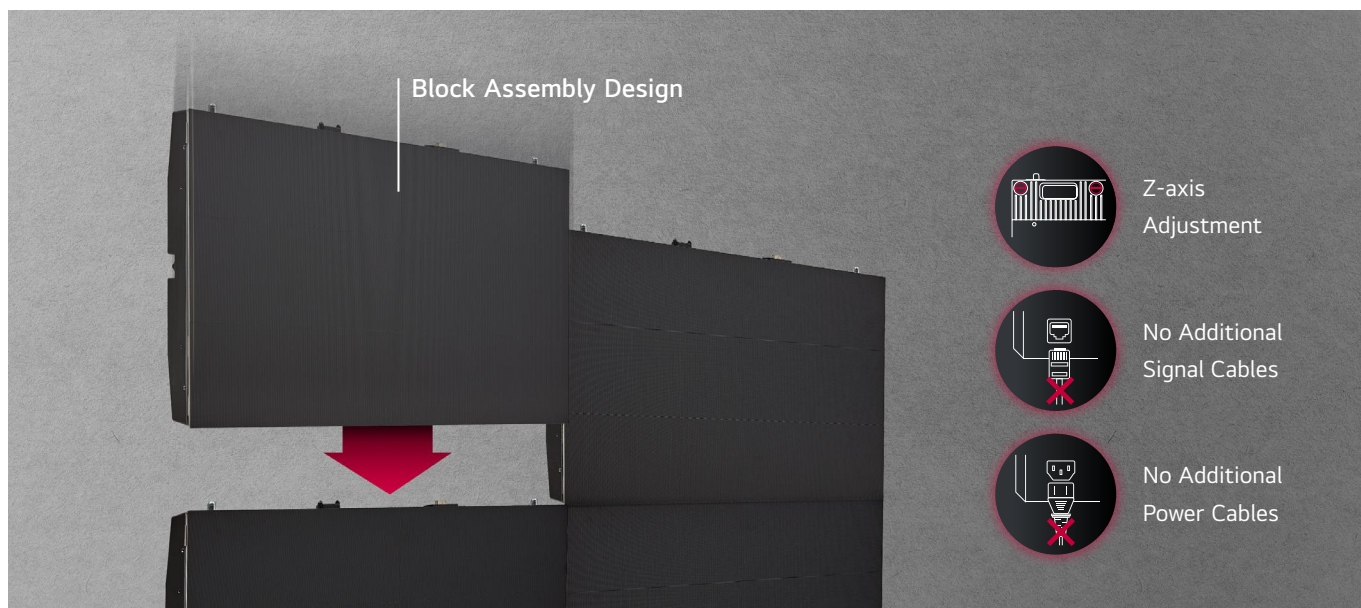
* HDR10 Pro is LG's own HDR solution to process HDR signal by using enhanced dynamic tone mapping.



Care Less with Sturdy Design

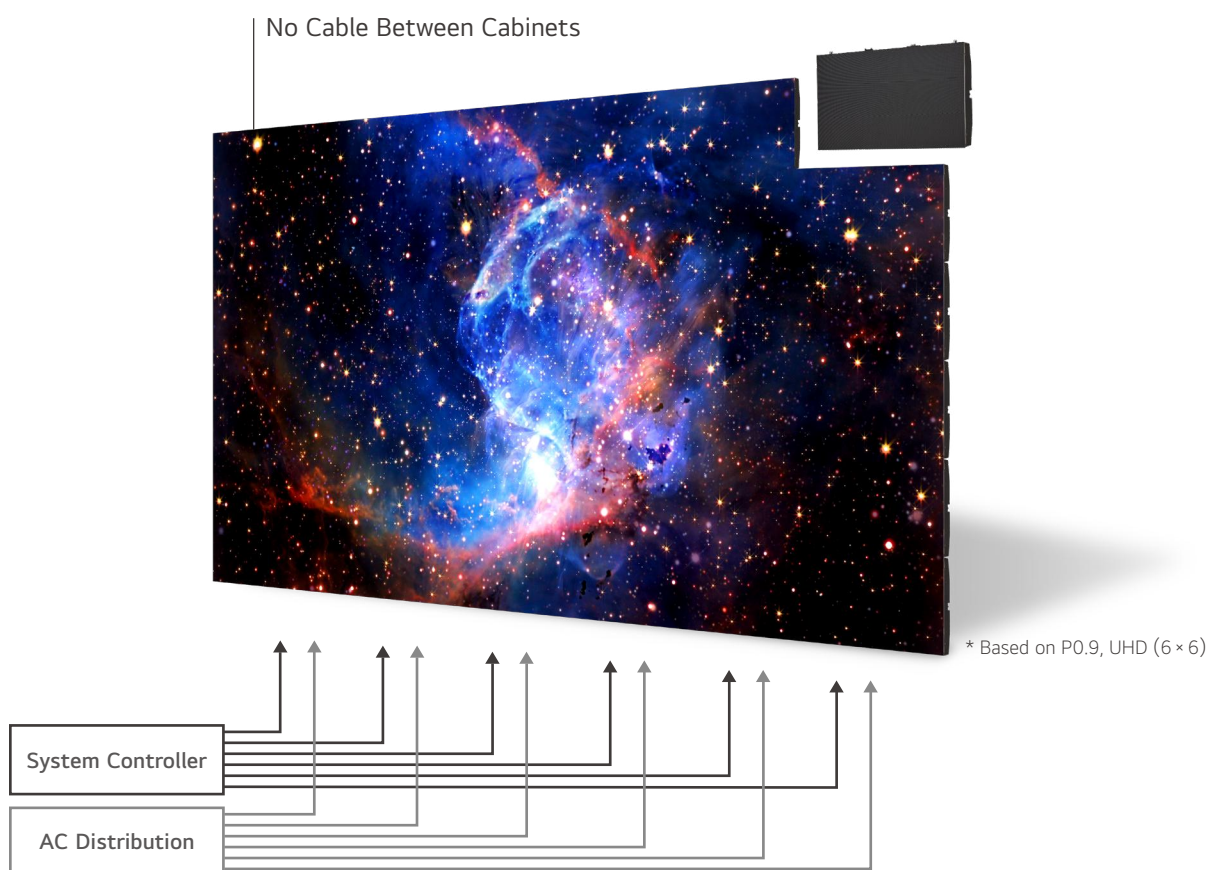
LG MAGNIT has improved durability to protect against various risks caused by factors such as dust, electro-magnetic interference, flame spread and physical impacts. This is particularly important for installation in public places, as it helps minimize unforeseen accidents.

* Based on in-house testing in accordance with the certification criteria, or under actual operating conditions.



Optimum Cable-less Design for Simple Installation

The Cable-less Signal Transmission technology has been adopted for innovative LG MAGNIT. Thanks to this, no signal and power cable connection is required between the cabinets and you don't need cables except for connecting the screen to its system controller and power. When configuring a UHD resolution screen of 16:9 ratio, only 6 signal cables and 6 power cables are needed. This way, its block assembly design facilitates hassle-free installation and simplifies rear structure of the screen.





Smart Power Management LED Display

LG MAGNIT realizes low power consumption with Common Cathode Drive-IC technology while running and switches to Standby Mode when there is no input signal to further save energy. The LG MAGNIT provides a smart power management solution that increases energy efficiency both in use and when not in use.



Compatibility with AV Control System

LG MAGNIT has been certified Crestron Connected® for a higher level of compatibility with professional AV controls to achieve seamless integration and automated control*, boosting business management efficiency.

* Network-based control



Dedicated Accessories for Tidiness

LG MAGNIT offers frame kits tailored to a variety of screen sizes—108", 136", and 163"—to create displays with smoother edges. Additionally, LG MAGNIT provide customizable wall mounts compatible with various sizes, ensuring the display integrates seamlessly into your space.



Real-time ConnectedCare Service

Maintenance is easy and fast with the optional ConnectedCare* service, a cloud service solution provided by LG. It remotely manages the status of displays in client workplaces for fault diagnosis and remote-control services, enabling the stable operation of clients' businesses.

* ConnectedCare is the brand name of LG Signage365Care Service. The availability differs by region.

PRODUCT INFORMATION

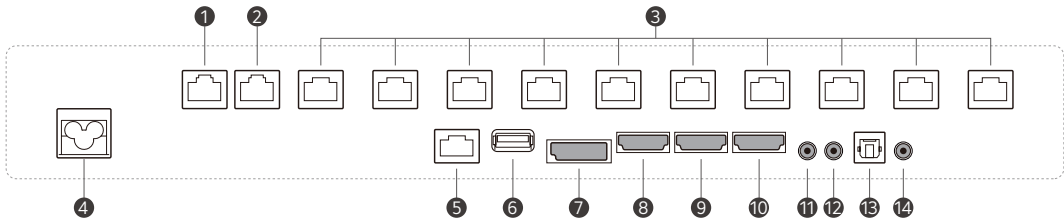


Cabinet	LSAB007-*22, LSAB009-*25/*33, LSAB012-*22
Pixel Configuration	Micro
Pixel Pitch	0.78 / 0.94 / 1.25 mm
Brightness	P0.78 : 500 / 1,000 nit (Peak.) P0.94 / P1.25 : 600 / 1,500 nit (Peak.)
Contrast Ratio	P0.78 : 28,000:1 @ 10lux P0.94 : 40,000:1 @ 10lux P1.25 : 40,000:1 @ 10lux
Processing Depth	20 (HDR10, HDR10 Pro)
Service Access	P0.78 / P0.94 / P1.25 : Front



System Controller	CSAD	CPAD
Resolution	3,840 × 2,160 @ 60Hz	7,680 × 4,320 @ 60Hz
Input	HDMI 2.0 (3 ports), HDCP 2.2, DP 1.2 (1 port) / HDCP 1.3	HDMI 2.1 (4 ports), HDCP 2.3
Output	Ethernet (10-channel)	Ethernet (24-channel)
Control	LAN, USB, Remote Control, RS-232C (LOOP)	LAN, USB, Remote Control, RS-232C (LOOP)

CONNECTIVITY
SYSTEM CONTROLLER



- 1 IR-APL OUT

2 IR-APL IN

3 Ethernet (5Gbps)

4 AC-IN
- 5 LAN IN

6 USB 2.0 IN

7 DP

8 HDMI 1
- 9 HDMI 2

10 HDMI 3

11 RS-232C IN

12 RS-232C OUT
- 13 OPTIC

14 IR & Light Sensor

SPECIFICATIONS

Cabinet	Model Name	LSAB007-*22	LSAB009-*25/*33	LSAB012-*22
Physical Parameters	Pitch Name	P0.78	P0.94	P1.25
	Pixel Configuration	Micro	Micro	Micro
	Pixel Pitch (mm)	0.78	0.94	1.25
	Module Resolution (W × H)	384 × 144	320 × 120	240 × 90
	Module Dimensions (W × H, mm)	300 × 112.5	300 × 112.5	300 × 112.5
	Weight per Module (kg)	0.18	0.19	0.18
	No. of Modules per Cabinet (W × H)	2 × 3	2 × 3	2 × 3
	Cabinet Resolution (W × H)	768 × 432	640 × 360	480 × 270
	Cabinet Dimensions (W × H × D, mm)	600 × 337.5 × 44.9	600 × 337.5 × 44.9	600 × 337.5 × 44.9
	Cabinet Surface Area (m ²)	0.2	0.2	0.2
	Weight per Cabinet (kg/Cabinet)	7.8	7.8	7.8
	Weight per Square Meter (kg/m ²)	38.5	38.5	38.5
	Physical Pixel Density (pixels/m ²)	1,638,400	1,137,778	640,000
	Flatness of Cabinet (mm)	±0.5	±0.5	±0.5
Optical Specifications	Cabinet Material	Die Casting Aluminum	Die Casting Aluminum	Die Casting Aluminum
	Service Access	Front	Front	Front
	Max. Brightness (After Calibration, nit)	500 / 1,000 (Peak)	600 / 1,500 (Peak)	600 / 1,500 (Peak)
	Color Temperature (K)	3,200-9,300 (Default 7,300)	3,200-9,300 (Default 7,300)	3,200-9,300 (Default 7,300)
	Visual Viewing Angle (H × V)	150 × 150	160 × 160	160 × 160
	Brightness Uniformity	95%	95%	95%
	Color Uniformity	±0.02 Cx, Cy	±0.02 Cx, Cy	±0.02 Cx, Cy
	Contrast Ratio	28,000 : 1 @ 10lux	40,000 : 1 @ 10lux	40,000 : 1 @ 10lux
Electrical Specifications	Processing Depth (bit)	20 (HDR10, HDR10 Pro)	20 (HDR10, HDR10 Pro)	20 (HDR10, HDR10 Pro)
	Power Consumption (W/Cabinet, Max.)	60	60	60
	Power Consumption (W/Cabinet, Avg.)	40	43	35
	Power Consumption (W/m ² , Max.)	296	296	296
	Heat Dissipation (BTU/h/Cabinet, Max.)	205	205	205
	Heat Dissipation (BTU/h/Cabinet, Avg.)	137	148	120
	Heat Dissipation (BTU/h/m ² , Max.)	1,011	1,013	1,013
	Power Supply (V)	100 to 240	100 to 240	100 to 240
Operation Specifications	Frame Rate (Hz)	50 / 60	50 / 60	50 / 60
	Refresh Rate (Hz)	3,840	3,840	3,840
	Lifetime (Half Brightness)	100,000	100,000	100,000
	Operating Temperature (°C)	0 to +40	0 to +40	0 to +40
Standard	Operating Humidity	10-80% RH	10-80% RH	10-80% RH
	IP Rating Front / Rear	IP50 / IP20	IP50 / IP20	IP50 / IP20
	Certification	Safety 60950-1, EMC Class B	Safety 60950-1, EMC Class B	Safety 60950-1, EMC Class B
Environment	Certification (Fire Protection)	BS476 Part7 Class1	BS476 Part7 Class1	BS476 Part7 Class1
	Controller	CSAD, CPAD	CSAD	CSAD
90 Degree Corner Cut		No	No	No

Controller	Model Name	CSAD	CPAD
Max. Output Range	Cabinet	LSAB Series	LSAB007-*22
	Loading Capacity	3,840 × 2,160 @ 60Hz	7,680 × 4,320 @ 60Hz
Input	Output Resolution	8.2944 Million Pixels	33.1776 Million Pixels
	HDMI	HDMI 2.0 (3 ports)	HDMI 2.1 (4 ports)
	HDCP	HDCP 2.2	HDCP 2.3
Output	DP	DP 1.2 (1 port) / HDCP 1.3	No
	Ethernet (To LED Screen)	Yes (10-channel)	Yes (24-channel)
Control	LAN	Yes	Yes
	USB	Yes	Yes
	RS-232C	Yes (LOOP)	Yes (LOOP)
	Remote Control	Yes	Yes
Sensor	Ambient Light (External Sensor)	Yes	Yes
	Temperature (Embedded Sensor)	Yes	Yes
Video Processing	Brightness Adjustment	Yes	Yes
	Chroma Adjustment	Yes	Yes
	Improved Grayscale at Low Brightness	Yes	Yes
	Scaling	Yes	Yes
Application	HDR	HDR10 / HDR10 Pro	HDR10 / HDR10 Pro / PQ / HLG
	CMS	SuperSign CMS	No
	webOS API	Yes	Yes
	LG ConnectedCare	Yes	Yes
Mechanical	Configuration SW	LED Assistant	LED Assistant
	Size (W × H × D, mm)	443 × 63 × 290	443 × 290 × 84
	Weight (kg)	6.4	7.1

* Specifications are subject to change without notice. Please make sure to check the product manual for details about product usage.



Download
LG C-Display+
Mobile App
Google Play Store

www.lg.com/global/business/information-display
www.youtube.com/c/LGCommercialDisplay
www.facebook.com/LGInformationDisplay
www.linkedin.com/company/lginformationdisplay
www.twitter.com/LG_ID_HQ

LG may make changes to specifications and product descriptions without notice.
 Copyright © 2024 LG Electronics Inc. All rights reserved. "LG Life's Good" is a registered trademark of LG Corp. The names of products and brands mentioned here may be the trademarks of their respective owners.